

PRPA LAND USE PLAN



UPDATE HIGHLIGHTS

- **Synthesis with Official Community Plans of neighbouring local governments**
- **New land use designations:**
 - Waterfront recreation areas in the inner harbour and Kitson Island
 - Viewscape buffer areas on Ridley Island
 - Habitat enhancement areas to designate environmental compensation activities
- **Inclusion of current and future road and rail infrastructure routes within PRPA jurisdiction**
- **Commitments to improve ongoing planning, communication and coordination with local First Nations and local governments.**
- **Commitments to update environmental planning, including cumulative impact modelling related to future port operations.**
- **Commitments to identifying new community projects that enhance local quality of life.**
- **Improved Land Use Plan update and revision processes that emphasize public engagement.**

The Prince Rupert Port Authority's updated Land Use Plan provides a vision for the Port of Prince Rupert's potential development through the next 20 years.

PRPA is committed to building a better Canada by growing trade. The Government of Canada has mandated PRPA to implement policies that provide the required infrastructure for the achievement of national, regional, and local social and economic objectives, and promoting and safeguarding Canada's competitiveness and trade objectives.

The Land Use Plan is a strategic document that will help guide PRPA's vision to continue to drive relentless innovation and catalyze growth in Canada's trade with the world through the next 20 years. The Plan is built to reflect PRPA's commitment to innovation, growth, and diversification, as well as sustainable environmental stewardship, operational safety and healthy local communities.

The next 20 years will bring exciting opportunities and challenges to PRPA and the Port of Prince Rupert. Mutually beneficial partnerships with local First Nations, municipalities and the communities they represent, will ensure the port continues to grow as a primary employer

and economic driver, while continuing to reflect environmental and social values through safe, sustainable, and responsible land development.

COMMUNITY ENGAGEMENT

The Land Use Plan update process provided multiple invitations and opportunities for input from local First Nations, local governments, and the general public.

Through advertising, surveys, open houses and meetings we asked for your participation before, during and after the development of this plan. PRPA received hundreds of survey results, comments, questions and submissions as a result.

This feedback was critical to ensuring a plan that achieved a sustainable and balanced perspective to future port growth and diversification. Thank you to everyone that contributed to its development.

To view the entire Land Use Plan, visit:

RUPERTPORT.COM



Land Use Plan Inner Harbour Planning District

Legend

- Navigable Water (PRPA Jurisdiction)
- Industrial
- Logistics
- Marine Industrial
- Marine Support
- Transportation
- Commercial
- Temporary Use
- Viewscape Buffer
- Waterfront Recreation
- Habitat Enhancement
- CN Rail Corridor
- Main Road / Highway
- CN Mainline
- Railway
- NOAA Environmental Sensitivity Index - Low
- NOAA Environmental Sensitivity Index - Medium
- NOAA Environmental Sensitivity Index - High

Data Sources:
- Prince Rupert Port Authority (2019)
- Data BC (2019)

Coordinate System:
NAD 1983 UTM Zone 9N



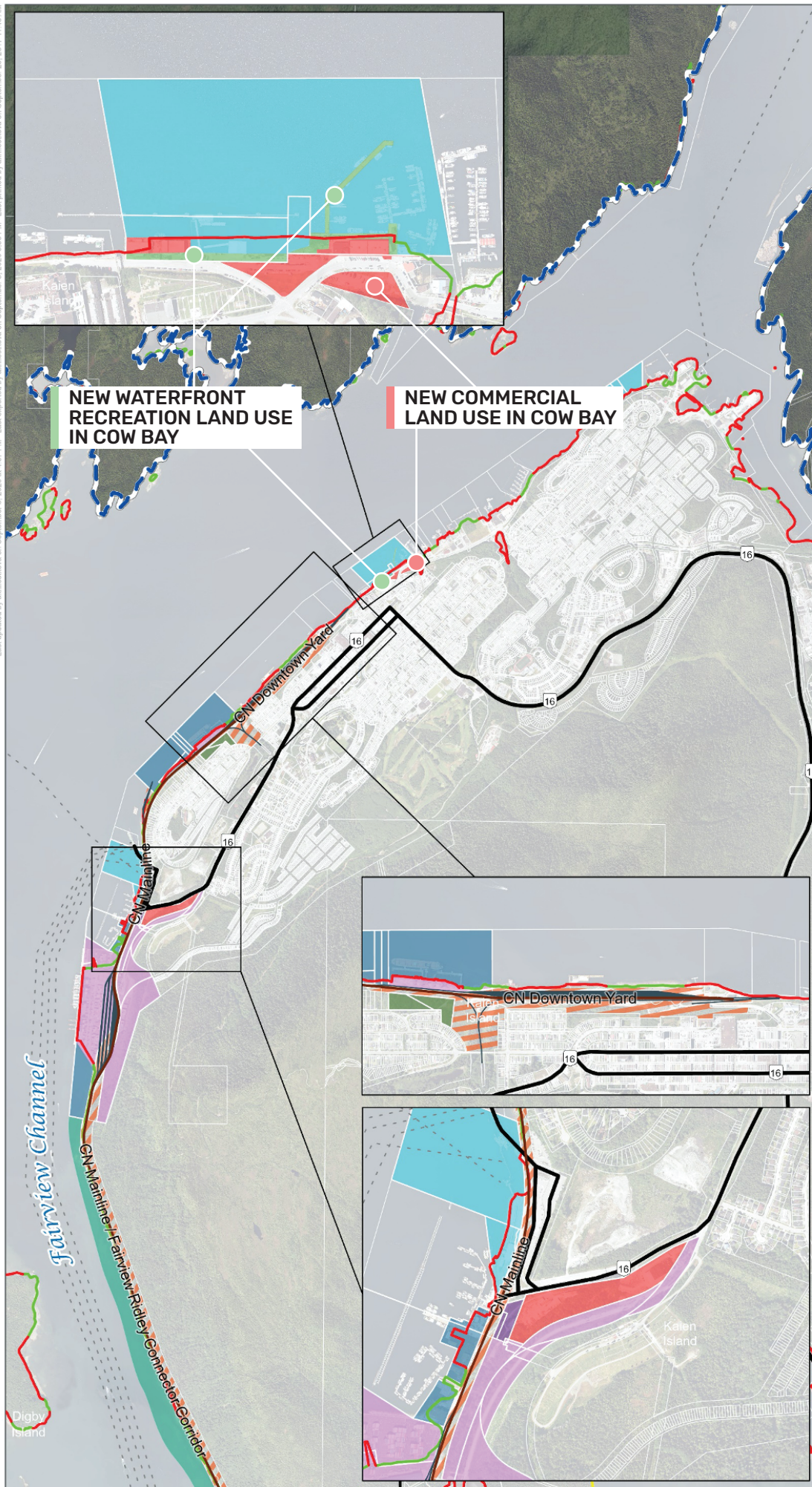
0 0.5
Kilometers

Scale: 1:30,000
(When plotted at 11"x17")

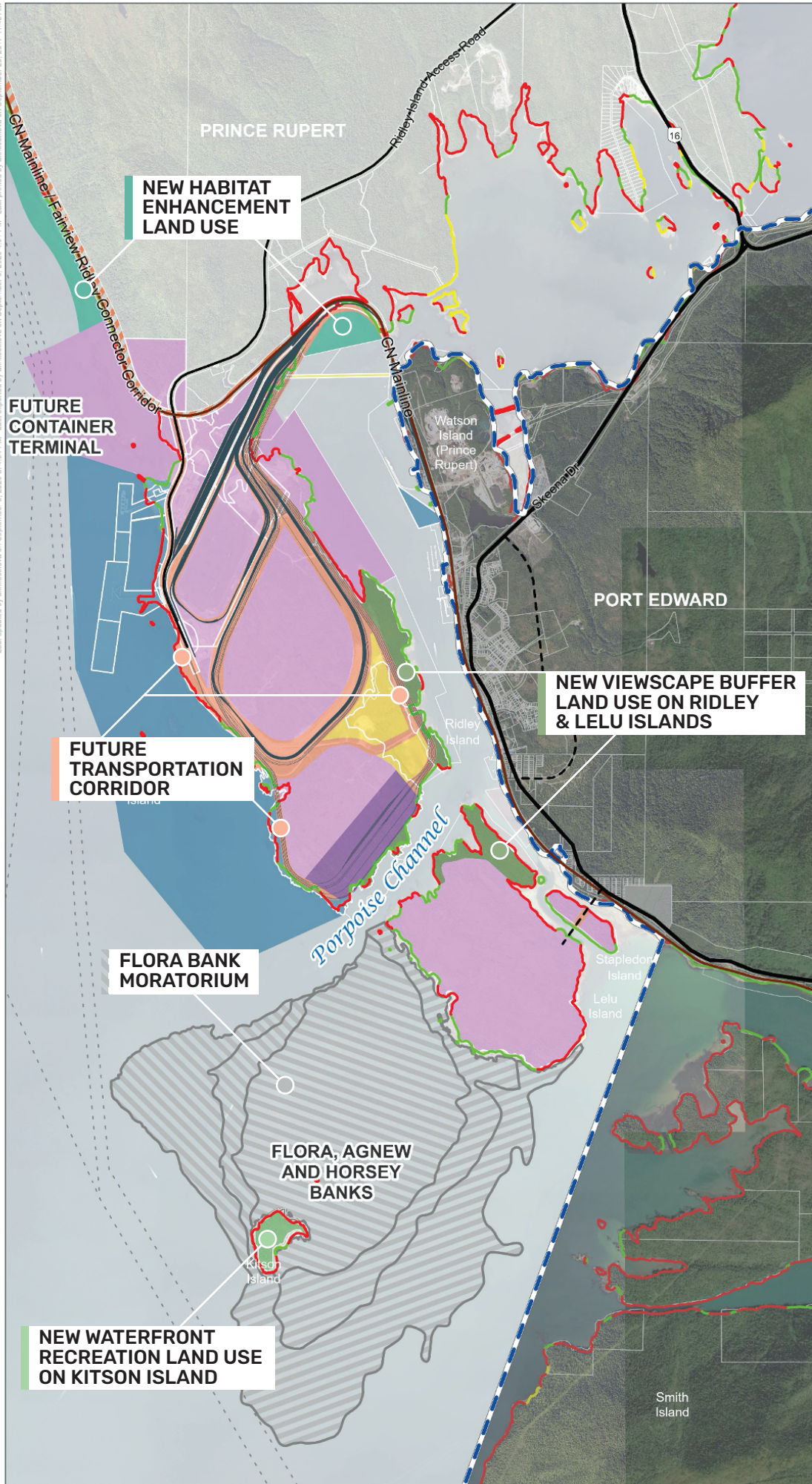
The accuracy & completeness of information shown on this drawing is not guaranteed. It will be the responsibility of the user of the information shown on this drawing to locate & establish the precise location of all existing information whether shown or not.

URBAN
systems

Project #: 4767.0001.01
Author: LP
Checked: AB
Status: **DRAFT**
Revision: A
Date: 2020 / 9 / 3



Last updated by administrators on September 3, 2020 at 4:01 PM. Last reported by administrators on September 3, 2020 at 4:01 PM. Last printed by administrators on September 25, 2017 11:48 AM.



Land Use
Plan
**Ridley Island
Planning
District**

Legend

- Navigable Water (PRPA Jurisdiction)
- Industrial
- Logistics
- Marine Industrial
- Marine Support
- Transportation
- Commercial
- Temporary Use
- Viewscape Buffer
- Waterfront Recreation
- Habitat Enhancement
- Development Moratorium
- CN Rail Corridor
- Main Road / Highway
- Proposed Road
- CN Mainline
- Railway
- NOAA Environmental Sensitivity Index
 - Low
 - Medium
 - High

Data Sources:
- Prince Rupert Port Authority (2019)
- Data BC (2019)

Coordinate System:
NAD 1983 UTM Zone 9N



0 0.5
Kilometers

Scale: 1:30,000
(When plotted at 11"x17")

The accuracy & completeness of information shown on this drawing is not guaranteed. It will be the responsibility of the user of the information shown on this drawing to locate & establish the precise location of all existing information whether shown or not.

URBAN
systems

Project #: 4767.0001.01
Author: LP
Checked: AB
Status: **DRAFT**
Revision: A
Date: 2020 / 9 / 3