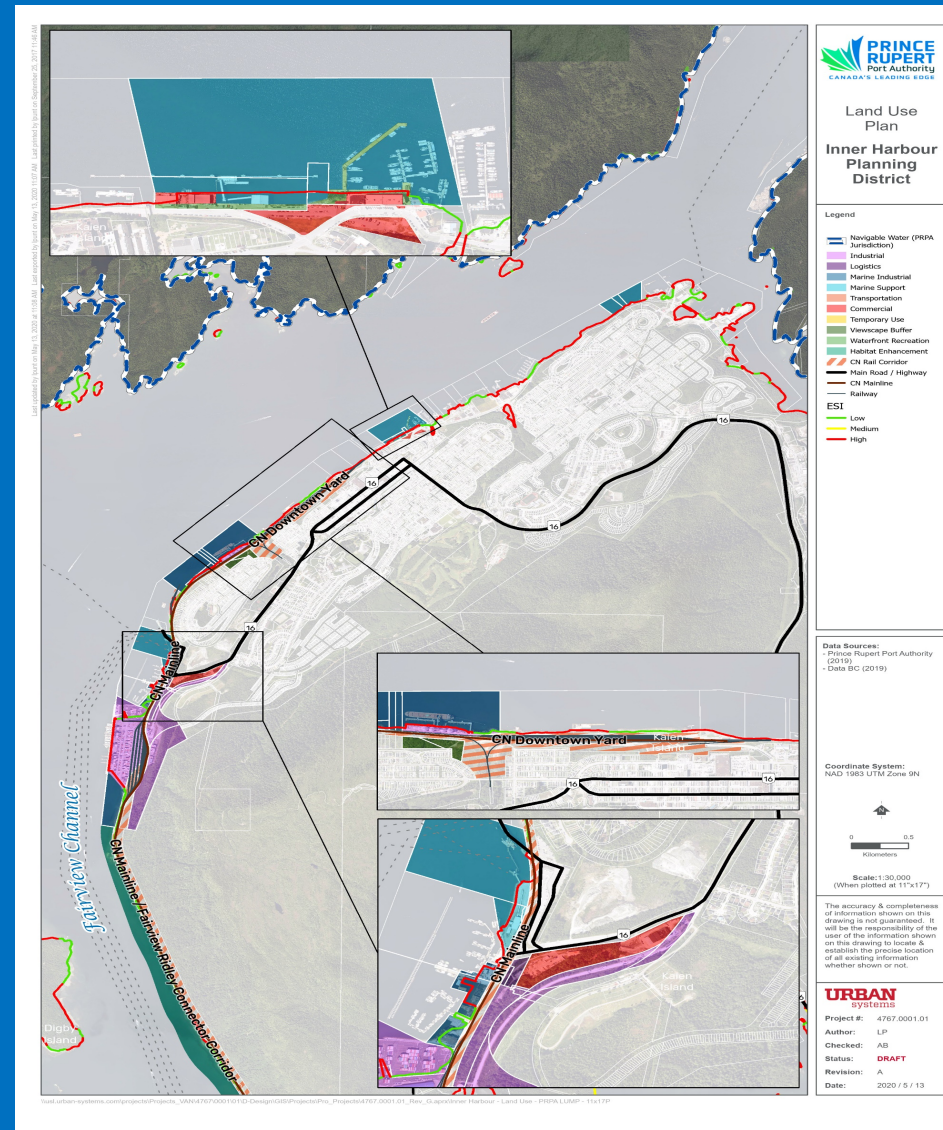


INNER HARBOUR LAND USE



Current Land Use Plan (2011)

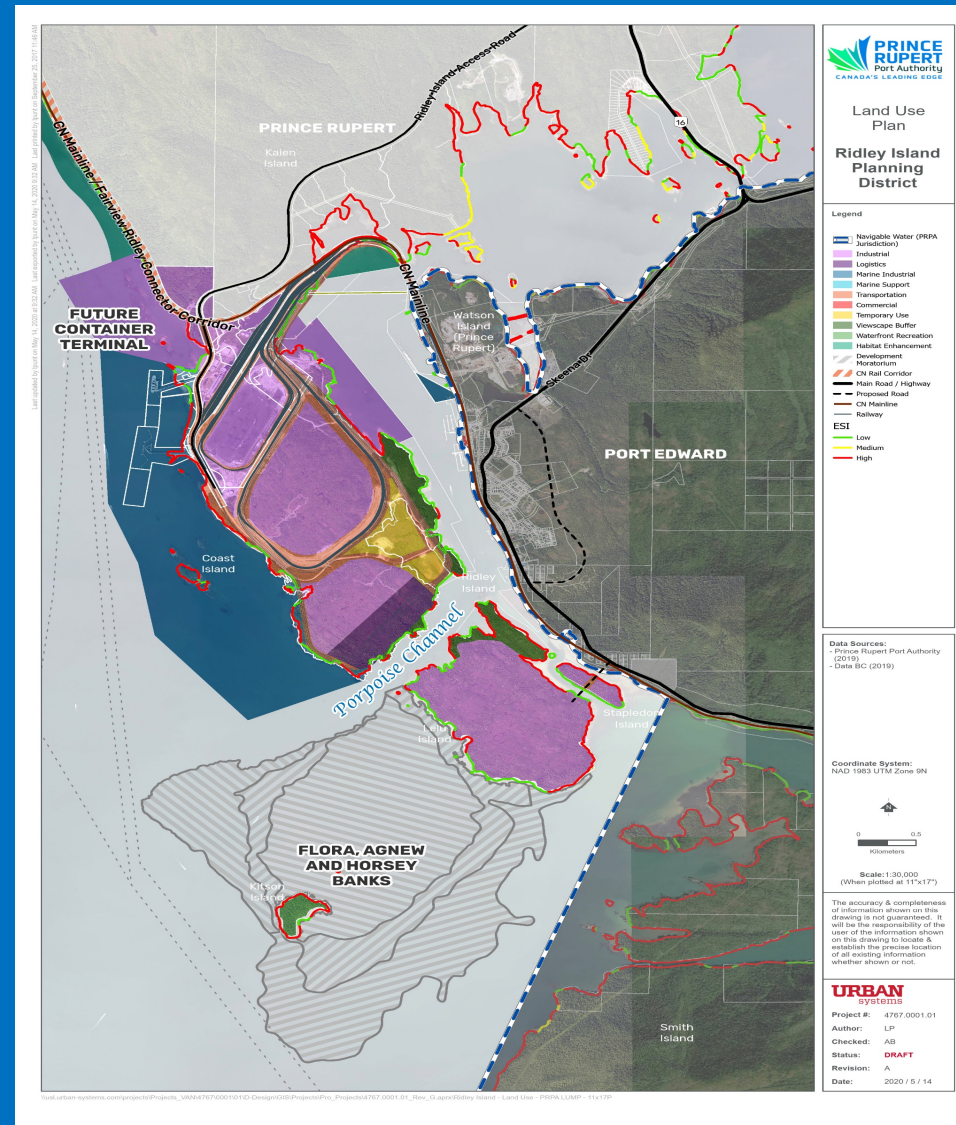


Updated Land Use Plan (2020)

RIDLEY & LELU ISLAND LAND USE



Current Land Use Plan (2011)

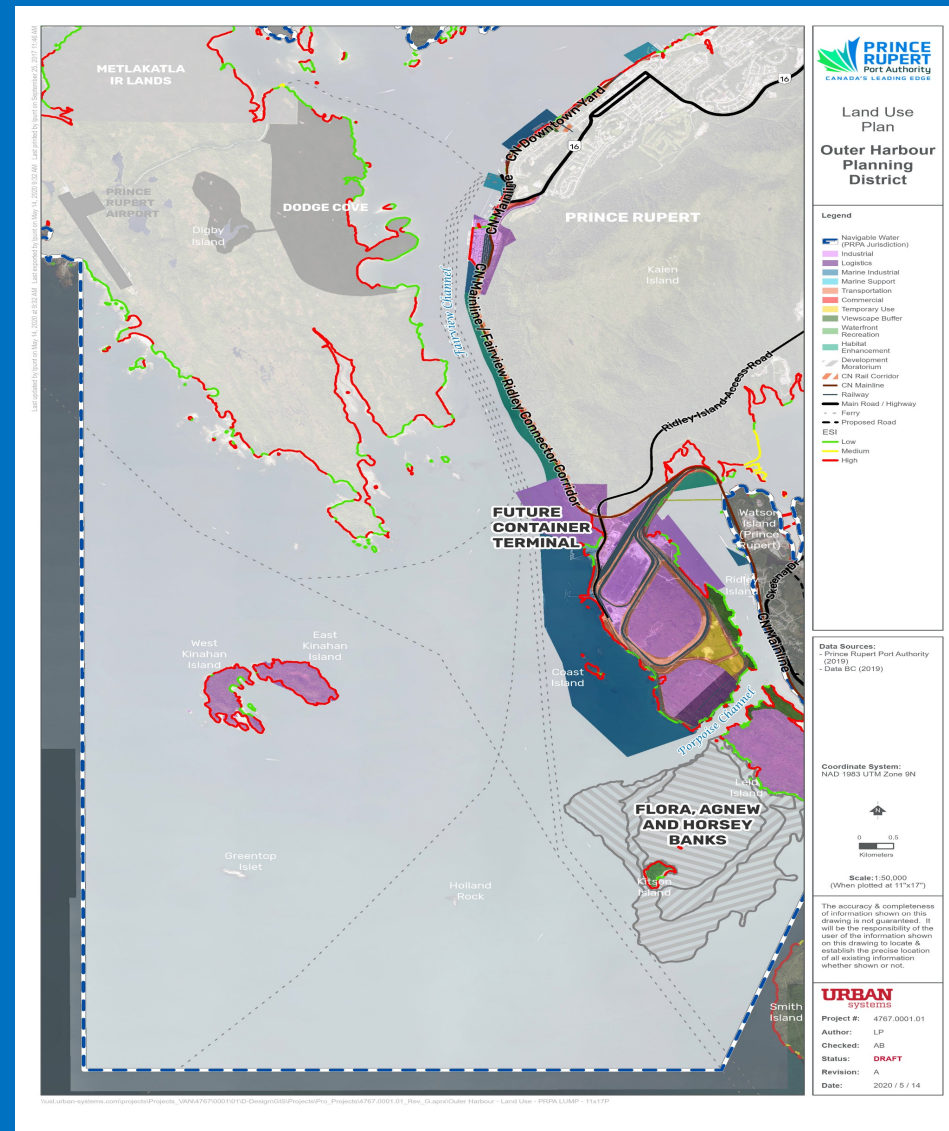


Updated Land Use Plan (2020)

OUTER HARBOUR LAND USE



Current Land Use Plan (2011)



Updated Land Use Plan (2020)

| LAND USE DESIGNATIONS

The update proposes a much more detailed approach to land use within the port, reflecting PRPA's increasingly sophisticated approach to forecasting and planning. Several new land uses have been created to achieve this.

| EXISTING LAND USES

- **Industrial**
- **Marine Support**
- **Logistics**
- **Commercial**
 - Converted from "Cruise/Mixed Use"

| NEW LAND USES

- **Marine Industrial**
 - Water side of industrial uses
- **Transportation & Utilities**
 - Road, rail, pipelines and power
- **Habitat Enhancement**
 - Protection for sensitive habitat areas
- **Viewscape Buffer**
 - Visual & acoustic barrier for residents
- **Waterfront Recreation**
 - Recreation and interpretive use
- **Temporary Use**
 - e.g. organic and sediment storage

