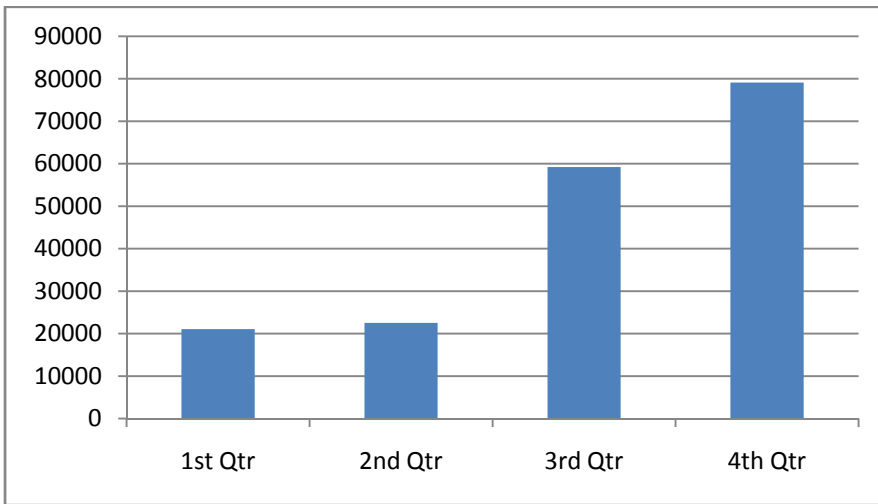
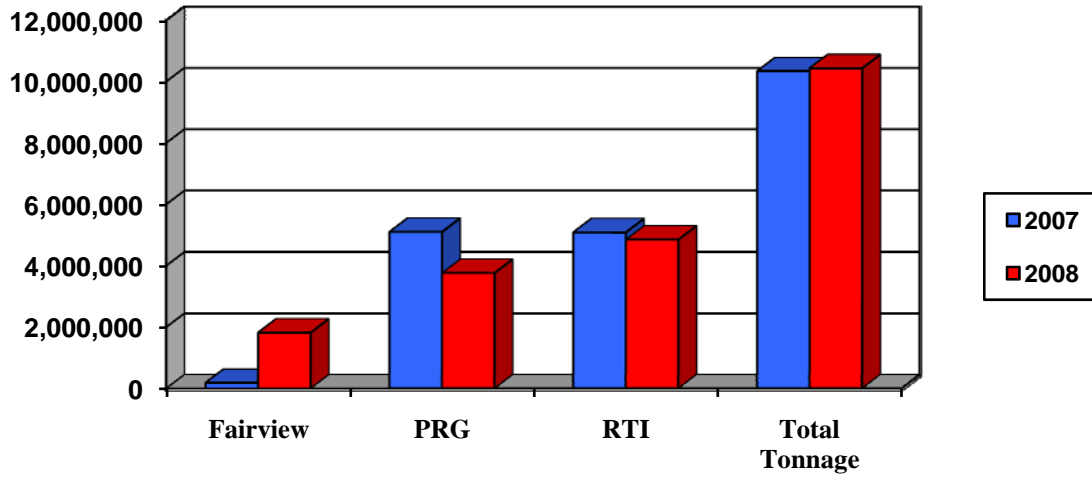


## Port of Prince Rupert

### 2008 Performance by Terminal

TERMINALS	Commodities	2007	2008	% Change
		<b>METRIC TONNES</b>		
<b>Fairview Terminal</b>	Containers	<b>*167,030</b>	<b>1,818,900</b>	<b>+988.9%</b>
	Wax	15,761	7,111	-54.9%
<b>Prince Rupert Grain</b>		<b>5,098,402</b>	<b>3,759,517</b>	<b>-26.3%</b>
	Barley	307,001	443,482	+44.5%
	Canola	229,568	323,465	+40.9%
	Feed Barley	63,000	0	-
	Grain Screen	11,235	14,912	+32.7%
	Wheat	4,487,598	2,977,658	-33.7%
<b>Ridley Terminals Inc.</b>		<b>5,085,771</b>	<b>4,847,031</b>	<b>-4.7%</b>
	Coal	4,402,316	4,109,428	-6.7%
	Coking Coal	260,414	307,798	+18.2%
	Petroleum Coke	357,714	358,404	+0.2%
	Wood Pellets	65,327	71,401	+9.3%
<b>Prince Rupert Harbour</b>	Logs	172,035	119,936	-30.3%
<b>CN Rail (Aquatrain)</b>	Chemicals	33,257	29,369	-11.7%
	L.P. Gas	8,987	5,984	-33.4%
<b><u>TOTAL</u></b>		<b><u>10,581,243</u></b>	<b><u>10,587,848</u></b>	<b>=</b>
		<b>TEUs</b>		
<b>Fairview Terminal</b>	Containers	<b>*16,703</b>	<b>181,890</b>	<b>+988.9%</b>
		<b>PASSENGERS</b>		
<b>Northland Terminal</b>	Cruise Passengers	98,170	103,635	+5.6%

\* *Fairview Terminal began operations Nov. 1, 2007*



**Fairview Terminal 2008 Quarterly Container Throughput**

